



Version	V1
Total page	13
Date	2010/2/23

Product Specification
TFT LCD DISPLAY Module

Model : VK-043-71A1 (1 CH CVS Input)
VK-043-71A4 (4 CH CVS Input)

4.3" (480xRGBx272)

Approval

Issue by	R & D	QA	ME	Approve by

The content of this specification is subject to change without notice
All rights strictly reserved. Any portion of this paper shall not be reproduced, copied, or transformed to any other forms without permission from Linkface Tech. Inc.,

Linkface Technology, Inc.

5F, No. 27, Lane 66, Jui-Kuang Rd, Neihu, Taipei, Taiwan
TEL : (02)2795-6800 FAX : (02)2795-4566 web: www.linkface.com.tw

Contents

1. Features	4
2. Specification	4
3. Dimension	5
4. Electrical Specifications	8
4.1. TFT LCD Panel	8
LCD PIN Assignment	
4.1.2. Operation Specifications	
4.2. A/D board, Socket PIN Assignment	10
4.3. Key board, Socket PIN Assignment	12
4.4. Key board, Switch function define	13
5. Replacement Parts and assembly number	13

All rights strictly reserved. Any portion of this paper shall not be reproduced, copied, or transformed to any other forms without permission from Linkface Tech. Inc.,

1. Features

- 16:9 Aspect Ratio Screen.
- 480x272 Resolution.
- LED Back Light
- High Brightness.
- Wide viewing angle.
- Video input channel up to 4 (Standard One channel).
- NTSC/PAL auto switch.
- 2W, 2CH, audio power amplifier (optional).



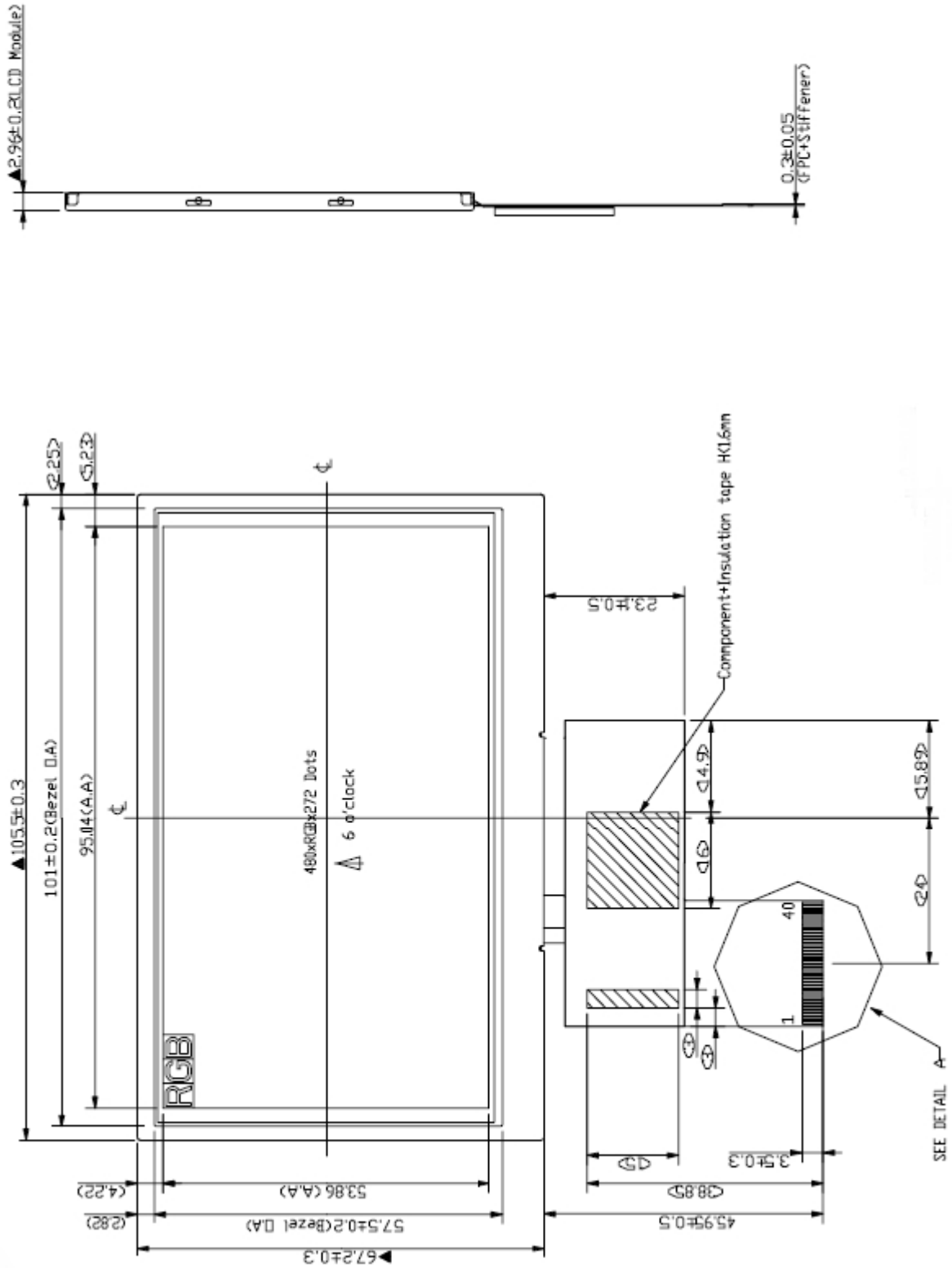
2. Specification.

Screen Size	4.3 inch
Number of Pixels	480(H) x RGB x 272(V)
Dot Pitch	0.198 (H) x 0.198 (V) mm
Pixel configuration	RGB-Stripe
Active Area (mm)	95.04(H) x 53.856(V)
Surface Treatment	Anti-glare (AG)
Operation Temp.(°C)	-20 ~ 70
Storage Temp.	-20 ~ 80
View Angle (U/D/L/R)	50/55/60/60
Brightness (nits)	410
Contrast Ratio	400
Response Time	20
Lamp Life (hrs)	20,000
Supply Voltage (VDC)	8 ~ 14
Power Consumption	1.7W (TYP.)
TV system	NTSC/PAL auto-switching
Video input Level	1V _{p-p} , 75Ω
Video input Signal	Standard Composite Video,
Video scan direction	Up to Down, Left to Right.
Audio Input (optional)	2 CH, 2W.
Video input channel	1 CH, VK-043-71A1. 4 CH, VK-043-71A4.

All rights strictly reserved. Any portion of this paper shall not be reproduced, copied, or transformed to any other forms without permission from Linkface Tech. Inc.,

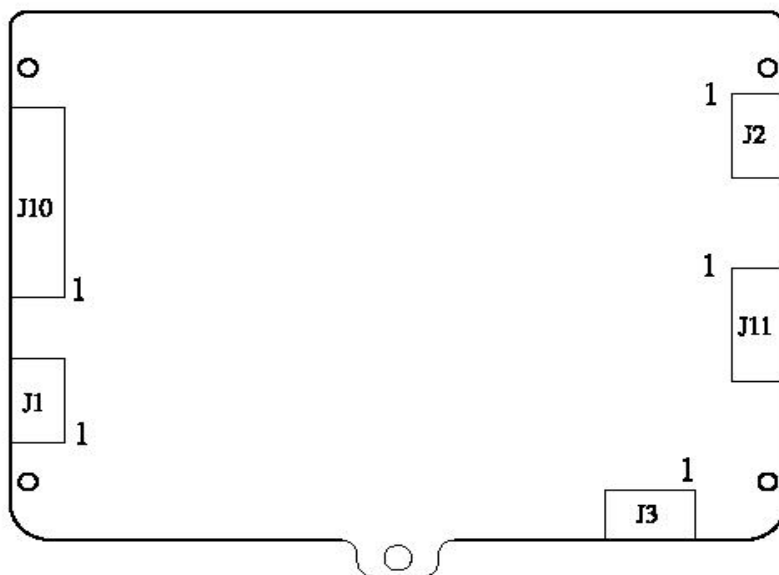
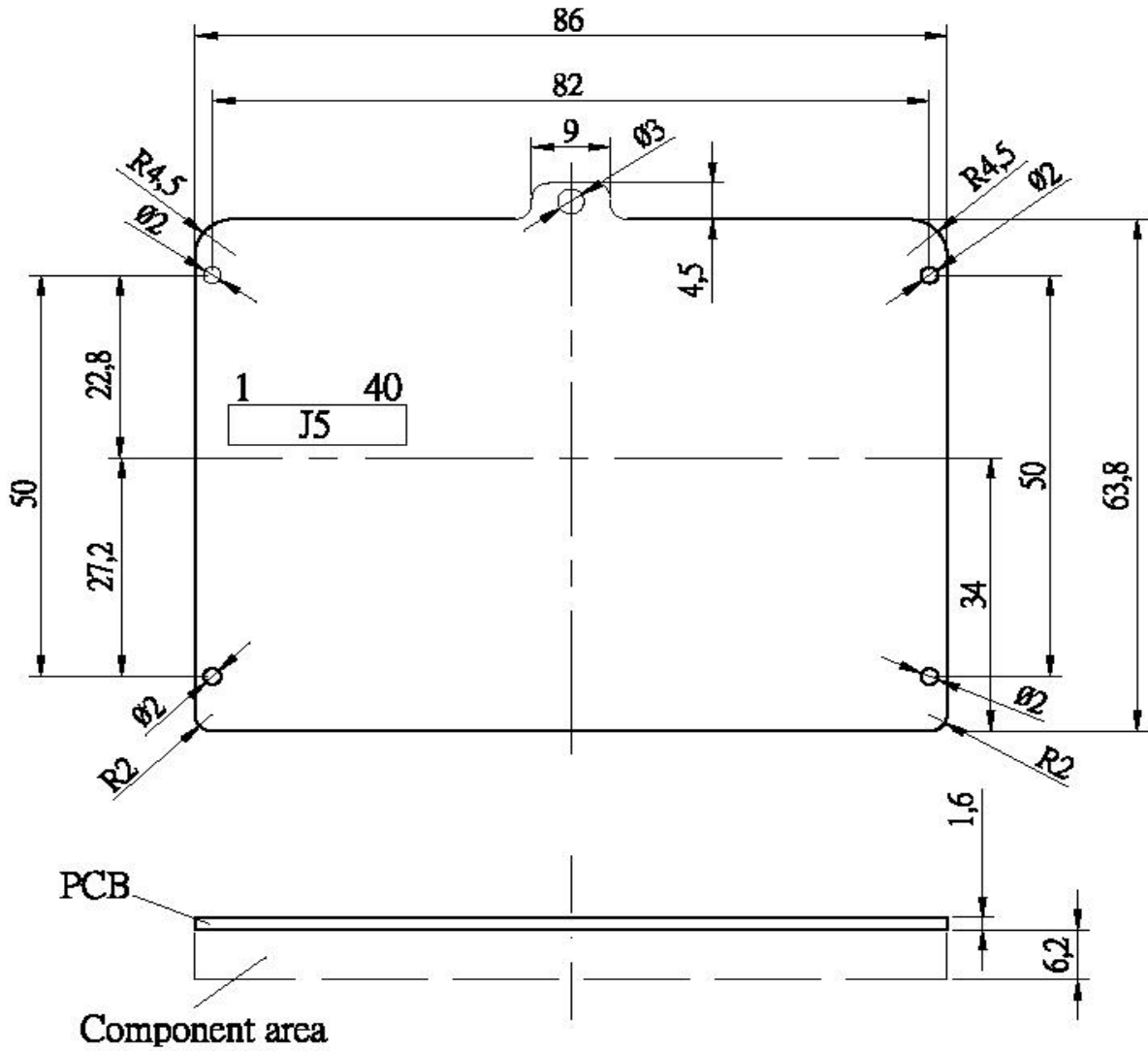
3. Dimension.

3.1. TFT LCD Panel Dimensions

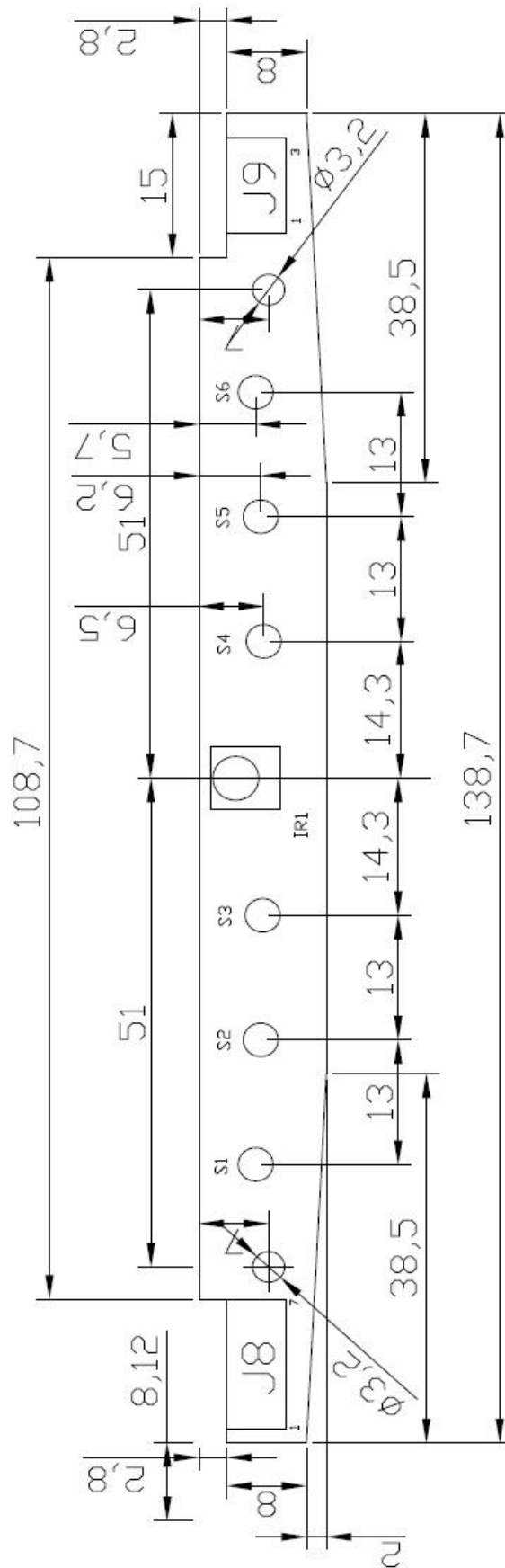


3.2. Display Module Dimensions

3.2. Driver Board Dimensions (Top View)



3.3. Key Board Dimensions (Top View)



T=1,0mm key board (component side)

4. Electrical Specifications

4.1. TFT LCD PANEL.

4.1.1. LCD PIN Assignment (J5)

Pin No.	Symbol	I/O	Function	Remark
1	V _{LED-}	P	Cathode for LED	
2	V _{LED+}	P	Anode for LED	
3	GND	P	Power ground	
4	V _{DD}	P	Power voltage	
5	R0	I	Red data input (LSB)	
6	R1	I	Red data input	
7	R2	I	Red data input	
8	R3	I	Red data input	
9	R4	I	Red data input	
10	R5	I	Red data input	
11	R6	I	Red data input	
12	R7	I	Red data input (MSB)	
13	G0	I	Green data input (LSB)	
14	G1	I	Green data input	
15	G2	I	Green data input	
16	G3	I	Green data input	
17	G4	I	Green data input	
18	G5	I	Green data input	
19	G6	I	Green data input	
20	G7	I	Green data input (MSB)	
21	B0	I	Blue data input (LSB)	
22	B1	I	Blue data input	
23	B2	I	Blue data input	
24	B3	I	Blue data input	
25	B4	I	Blue data input	
26	B5	I	Blue data input	
27	B6	I	Blue data input	
28	B7	I	Blue data input (MSB)	
29	GND	P	Power ground	
30	CLK	I	Pixel Clock	
31	DISP	I	Display ON/OFF, H= normal, L=stand by mode.	

32	Hsync	-	Horizontal sync signal.	
33	Vsync	-	Vertical Sync signal.	
34	DE	I	Data enable	
35	NC	-	No Connection	
36	GND	P	Power ground	
37	NC	-	No Connection	
38	NC	-	No Connection	
39	NC	-	No Connection	
40	NC	-	No Connection	

I: input, O: output, P: power.

4.1.2. Operation Specifications

4.1.2.1. Absolute Maximum Ratings

Item	Symbol	Values		unit	Remark
		Min.	Max.		
Power voltage	V _{DD}	-0.3	4.0	V	
LED Reverse voltage	V _{RLED}	-	5	V	Each LED
LED Forward current	I _F	-	30	mA	Each LED
Input signal voltage	V _I	-0.5	4.0	V	
Operation Temperature	T _{OP}	-20	70	°C	
Storage Temperature	T _{ST}	-20	80	°C	

4.1.2.2. Typical Operation Conditions

Item	Symbol	Values			Unit	Remark
		Min.	Typ.	Max.		
Power voltage	V _{DD}	3.0	3.3	3.6	V	
	V _{LED}	-	30	-	V	
Current consumption	I _{CC}	-	15	-	mA	
	I _{LED}	-	20	-	mA	
Input logic high voltage	V _{IH}	0.8V _{DD}	-	V _{DD}	V	
Input logic low voltage	V _{IL}	0	-	0.2V _{DD}	V	

4.2. A/D board, Socket PIN Assignment

For VK-043-71A1 1 channel Video input.

J10: Input Connector (Pitch= 1.25mm, 7 PIN)

Pin	Function	Note
1	CVS IN	
2	GND	
3	GND	
4	DC12V	
5	Audio L in	Optional
6	Audio R in	Optional
7	GND	

For VK-043-71A4 4 channel Video input.

J10: Input Connector (Pitch= 1.25mm, 15 PIN)

Pin	Function	Note
1	CVS 4 IN	Channel 4
2	GND	
3	CVS 3 IN	Channel 3
4	GND	
5	CVS 2 IN	Channel 2, Second priority display channel when pin 14 input=5~12V
6	GND	
7	CVS 1 IN	Channel 1, first priority display channel when pin 15 input=5~12V
8	GND	
9	GND	
10	DC12V	Power Input
11	Audio L in	Optional
12	Audio R in	Optional
13	GND	
14	B IN	Channel 2, Second priority display channel when pin 14 input=5~12V, GND= function disable
15	R IN	Channel 1, first priority display channel when pin 15 input=5~12V, GND= function disable

J1: 2 CH Audio Amplify output to speaker (optional).
 (Pitch= 1.25mm, 4 PIN)

Pin	Function	Note
1	L Out +	
2	L Out -	
3	R Out +	
4	R Out -	

J3: Program download port. (Pitch= 1.25mm, 4 PIN)

Pin	Function	Note
1	VCC 5V	
2	TX	Optional
3	RX	
4	GND	

J11: Key Board Connector (Pitch= 1.25mm, 7 PIN)

Pin	Function	Note
1	GND	
2	+ / UP	
3	MENU	OSD mode
4	- / DOWN	
5	SOURCE	Input signal Select
6	MUTE	For Audio volume
7	POWER	Power on/off

J12: Optional IR remote function Connector (Pitch= 1.25mm, 3 PIN)

Pin	Function	Note
1	GND	
2	IR Data Input	
3	+3.3V	

J2: External LED driver interface (optional) (Pitch= 1.25mm, 4 PIN)

Pin	Function	Note
1	VCC 12V	power
2	ON/OFF	
3	Dimming	
4	GND	

4.3. Key board, Socket PIN Assignment

J8: Pitch= 1.25mm, 7 PIN.

Pin	Function	Note
1	GND	
2	+ /UP	
3	MENU	OSD mode
4	- /DOWN	
5	SOURCE	Input signal Select
6	MUTE	For Audio volume
7	POWER	Power on/off

J9: Optional IR function connector

Pin	Function	Note
1	GND	
2	IR Data Input	
3	+3.3V	

4.4. Key board, Switch function define.

NO	Function	Note
S1	- /DOWN	
S2	MENU	OSD mode
S3	+ /UP	
S4	SOURCE	Input signal Select
S5	MUTE	For Audio volume
S6	POWER	Power ON/OFF

5. Replacement Parts and assembly number:

<u>Parts NO.</u>	<u>Description</u>
VB-043-71	LCD A/D Board, 1 Channel Video input
VB-043-71A4	LCD A/D Board, 4 Channel Video input
0501-1002-06	Key board assembly
LM-043-74L	TFT LCD Module